



Company Profile

公司简介

东莞市琪正塑胶机械设备制造有限公司成立于2005年，为一般纳税人企业，是一家专业从事研究开发、设计、生产、销售维修服务为一体的独资企业，多年来不断创新改良，结合各类塑机之优点，根据客户之意见，设计出的产品赢得广大客户的认可及好评，雄厚的技术力量及齐全的加工设备，成熟丰富的制造经验，结合现代化的企业管理模式，方便快捷的售后服务，促使我们的产品销往全国各地，并出口多个国家及地区，在该行业内成为最专业的供货商，真正让琪正品牌在该行业内普及中国，走向世界！

琪正公司在一批高水准的工程技术人员带领下，大批量生产挤出造粒、注塑成型配套生产线，立式混料机（500KG-15吨）、卧式混料机（50KG-3吨）、脱水机、切料机、各式振动筛选机、色粉打粉机、水环风环模头切料机、自动螺杆上料机、拉条吸水机、储料斗、水槽、破碎机、立式卧式烘干搅拌机等一系列产品，每种设备都是推动该行业向高效、节能、环保、方便等全方面发展的利器。

协力为您服务，是琪正公司的所愿与所求，公司一直以“质量第一、服务至上、保持优质专业的售后服务”为宗旨，以“恪守诚信、创新、追求永续经营”为理念，您的满意，我们的成功，让我们携手共进，共同发展，共创未来，期待您永远的支持！

Eternal Quality Enterprise
Details Create Brand Service Create Praise

质量永恒企业 细节铸造品牌 服务创造口碑

Dongguan Qizheng Plastic Machinery Co.,Ltd. was established in 2005, as a general taxpayer enterprises, we are professional engaged in research, development, design, production and sales maintenance services as one of the wholly-owned enterprises. Over the years continue to innovat and improve, combined with the advantages of various types plastic machinery, according to the views of customers, designed products to win the majority recognition and praise from customers. Strong technical force and complete processing equipment, mature rich manufacturing experience, combined with modern enterprise management mode, convenient and efficient after-sales service, prompting our products sold throughout the country and exported to many countries and regions. It is leading us to become the most professional supplier in our industry, and let our brand popularize in China and towards the world.

Qizheng is the company under the leadership in high standards of engineering and technical personnel to large-volume production of extruder granulation, auxiliary engine for injection molding production lines, vertical screw mixer (500KG-15T), horizontal ribbon mixer (50KG-3T), dewatering machine, granulator /pelletizer, vibrating screen machine, toner powdering machine, water ring die head pelletizer, automatic screw loader, pulling water suction machine, storage hopper, water tank, crushing machine, vertical and horizontal drying mixer and so on. Each device is the sharp to promote the industry to efficient, energy saving, environmental protection, convenience and other fields of the development.

Working together for servicing you is what we want. We has been "quality first, service first, to maintain high quality professional after-sales service" for the purpose, "abide by the integrity, innovation, the pursuit of sustainable development" for the idea. Your satisfaction, our success, let us join hands and common development, create a better future and look forward to your permanent support.

Production Workshop

生产车间



服务体系 Service System

售前服务

- ▲ 详细介绍产品特点，认真了解生产需求；
- ▲ 根据加工物料和工艺，为您策划最优的装备配置方案；
- ▲ 提供新工艺、新配方的试验条件。

售中服务

- ▲ 提供项目所需的公用工程条件、安装布置规划图等相关资料；
- ▲ 提供针对不同生产工艺需要的不同螺杆构成和筒体排列形式；
- ▲ 及时与您沟通项目进度情况；
- ▲ 严格执行技术附件条款，确保产品按期保质交付。

售后服务

- ▲ 提供设备现场安装指导、全面调式、操作人员岗前培训；
- ▲ 建立详细的用户服务档案，终身跟踪服务；
- ▲ 长期保证充足备件供应，长期提供免费技术咨询服务；
- ▲ 用户回访制度化，及时反馈设备现场使用信息；
- ▲ 设备一年内免费三包。

Pre-sale service

- ▲ Detailed introduction to product features, careful understanding of production needs
- ▲ Plan the optimal equipment configuration plan for you according to the processing materials and processes
- ▲ Provide experimental conditions for new processes and new formulations

Sale service

- ▲ Provide relevant project conditions, installation layout plan and other related materials required for the project
- ▲ Provide different screw configurations and barrel arrangements for different production processes
- ▲ Communicate with you on the progress of the project in time
- ▲ Strict implementation of technical annex terms to ensure that products are delivered on time and in good quality

After-sales service

- ▲ Provide on-site installation guidance, comprehensive commissioning, and pre-employment training for operators
- ▲ Create detailed user service files: lifetime tracking service
- ▲ Long-term guarantee of adequate spare parts supply, long-term free technical consulting services
- ▲ User return visit system, timely feedback equipment on-site use information
- ▲ Free three-guarantee of equipment within one year

Contents 目录

- | | |
|--|--|
| 01 挤出造粒自动化系统
Extrusion Pelletizer Automatization System | 24 洗料脱水机
Dewatering Machine With Washing |
| 03 立式混料机
Vertical Screw Mixer | 25 平行同向双螺杆挤出机
Parallel Twin Screw Extruder |
| 05 立式干燥混料机
Vertical drying mixer | 27 单螺杆挤出机系列
Single Screw Extruder Series |
| 07 卧式混料机
Horizontal Ribbon Mixer/Blender | 28 溶体搅拌机系列
Liquid Mixer/Chemical Mixer |
| 09 自动称重包装
Automatic Weighing Packaging | 29 造粒生产线拉条打水机
Pull Line Water Remover for Extruder Line |
| 11 粉碎机
Plastic Crushing Machine | 29 造粒生产线拉条吹干机
Pull Line Dryer for Extruder Line |
| 13 立式混色机
Vertical Color Blending Machine | 30 液体注塞泵
Liquid Injection Pump |
| 14 翻斗卧式混色机
Rolling-over Horizontal Color Mixer | 30 挤出机真空桶
Extruder Vacuum Bucket |
| 15 振动垂直提升机
Vibrating Vertical Elevator Machine | 31 油品计量机
Oil Measuring Machine |
| 16 储料振动筛选一体机
Vibrating Screen Machine With Storage Tank | 31 圆盘振动筛选机
Circular Vibrating Screen Machine |
| 17 真空吸料机
Vacuum Feeder/Loader Machine | 32 垂直输送斗式提升机
Vertical Conveyor Bucket Elevator |
| 18 吸料机、集中供料
Vacuum Loader and Centralized Feeding | 33 物料储存仓
Material Storage Tank |
| 19 振动筛选机
Vibrating Screen Machine | 34 高速混合机
High Speed Mixer |
| 20 水下造粒脱水机
Underwater Granulation Dewatering Machine | 34 金属分离器
Metal Separator |
| 21 大型滚桶混料机
Large Drum Mixer | 35 自动化输送、配料系统方案图
Automatic Conveying and Batching System Plan Diagram |
| 22 螺杆输送机系列
Screw Conveyor Series | 36 自动化输送、配料系统实例图
Automatic Conveying and Batching System Instance Diagram |
| 23 切料机
Granulator Cutting Machine | 37 工程案例
Engineering Case |

Extrusion Pelletizer Automation System

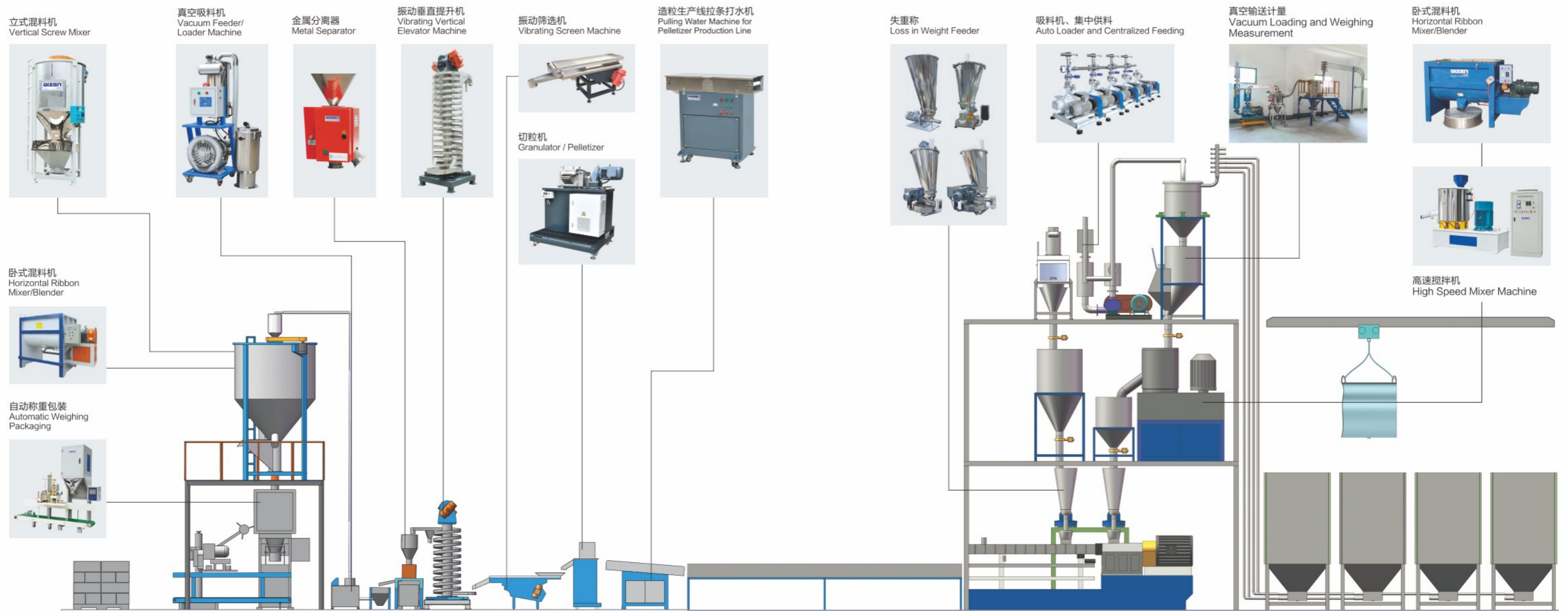
挤出造粒自动化系统

将您的出发点目的地，我们一路保驾护航，用最经济、最实效的一站式系统解决方案，提供最优质的服务，倾力打造最佳的改性、再生塑料自动化生产线。

We will escort all the way in the most economical and most effective one-stop system solutions for your point of departure to destination. And provide the best quality service, effort to create the best modified and recycled plastic automated production line.

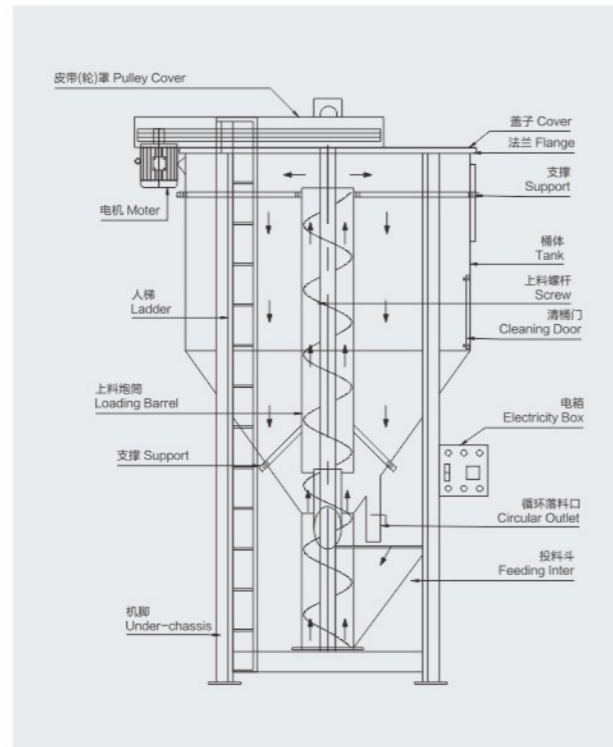
再生、改性工程塑料生产工艺及整厂设备配套方案

Recycling and Modified Engineering Plastic Production Process, and Complete Plant Equipment Supporting Program



Vertical Screw Mixer

立式混料机



结构简图 Structure diagram

特点 Features

- ▲ 大型立式混料机，采用螺旋搅拌工作之原理，将投入投料斗中的物料通过螺旋主轴输送到桶体上端，再以伞状形落下且一直持续循环搅拌，从而达到混合均匀的目的；
- ▲ 大型立式混料机具有：自动运转时、过载保护、加料限位报警等功能；并有占地少、容量大、耗电低、省人工、操作方便、混合快捷均匀等特点。可广泛应用于：塑胶粒料、粉碎料、塑胶片料、塑胶新旧料及添加色母搅拌均化等用途；
- ▲ 应用行业：管材型材、塑胶建材、塑胶造粒、色母制造、塑料改性、再生料回收加工、大件注塑、食品、大米、豆类搅拌等行业。

- ▲ By the principle of spiral mixing working, conveying the material in the hopper to the top of the barrel by the screw main shaft, and then it will drop as umbrella-shape and keep mixing circularly all the way in order to mix equally.
- ▲ With the function of automatic operation, overload protection, feeding limit alarm, etc. Less land occupation, large capacity, low power consumption, labor saving, convenient operation, fast and homogenized mixing. It can be widely used in plastic granule, powder, plastic sheet, new and old plastic material, mixing with color masterbatch and so on.
- ▲ Application of industry: pipe material, plastic building material, plastic granulator/pelletizing, color masterbatch producing, plastic modification, recycled materials processing, large injection molding, food, rice, beans and so on.

规格参数表 Specification Parameter of All Models

型号 Model	名称 Name	主机功率 Power	电压 Voltage	容量 Capacity	外型尺寸 Size
QZ-500	立式混料机 Vertical Screw Mixer	4KW-4	380V	0.5T	φ1200 × 2650mm
QZ-1000		4KW-4	380V	1T	φ1500 × 2800mm
QZ-2000		5.5KW-4	380V	2T	φ1800 × 3250mm
QZ-3000		7.5KW-4	380V	3T	φ2000 × 3750mm
QZ-5000		7.5KW-6	380V	5T	φ2400 × 4200mm
QZ-6000		11KW-6	380V	6T	φ2500 × 4500mm
QZ-7500		11KW-6	380V	7.5T	φ2600 × 5100mm
QZ-8000		11KW-6	380V	8T	φ2750 × 5100mm
QZ-10000		11KW-6	380V	10T	φ3000 × 5350mm
QZ-12000		15KW-6	380V	12T	φ3100 × 5500mm
QZ-15000		18.5KW-6	380V	15T	φ3200 × 6500mm

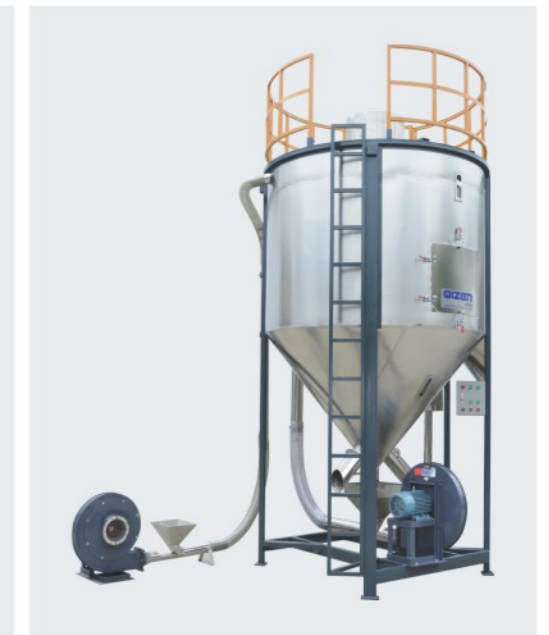
备注：可根据客户要求选用不同材质制作，如A3铁板、201不锈钢、304不锈钢
It can be made of different material according to customers' requirement, such as A3 iron plate, 201SS, 304SS



立式混料机投料口带强制喂料
Vertical Mixer Feeding Port with Forced Feeding

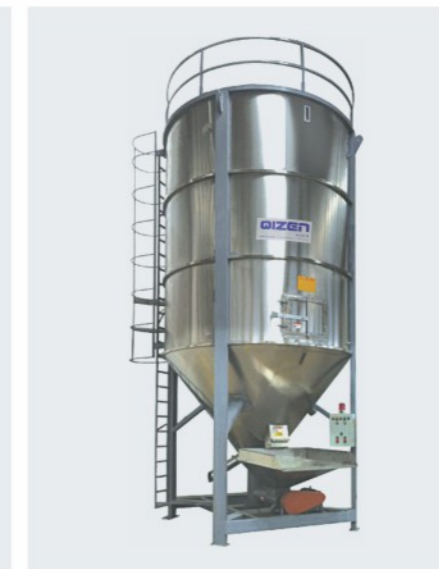


立式混料机双投料口
Vertical Mixer Double Feeding Port



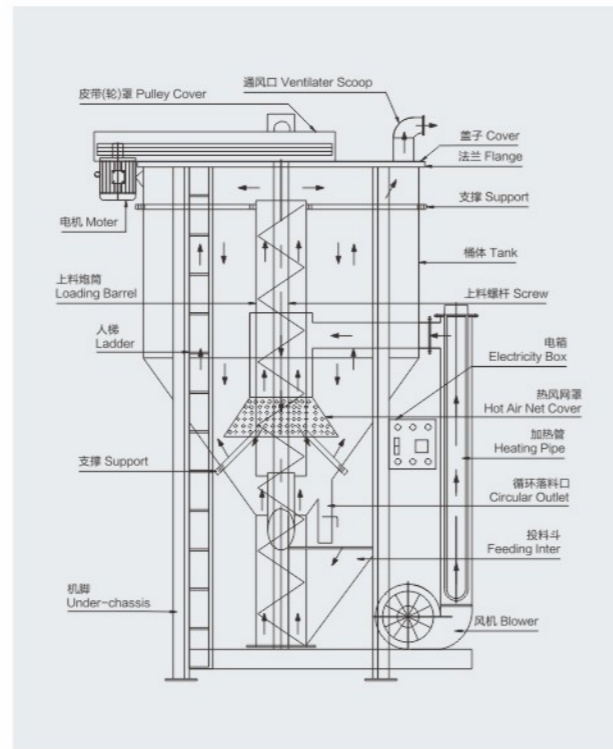
风冷循环混料机
Air-cooled cycle mixer

更多款式立式混料机 More Styles Vertical Mixer



Vertical Drying Mixer

立式干燥混料机



结构简图 Structure diagram

立式干燥混料机说明 Vertical Dry Mixer Description

立式干燥混料机主要适用于：塑胶粒料、粉碎料、塑料片状料的干燥搅拌等用途，本系列机器具有以下特点：

- ▲ 搅拌干燥同步：由于物料在进行干燥过程中，持续保持流动状态，热量渗透均匀，干燥时间短且不易结块；
- ▲ 本系列标准机型为：双层桶体设计，内层与物料接触部份全部为不锈钢材料制造，中间夹层安装特殊保湿材料，因而可达到安全、节能的效果；
- ▲ 特制高频加热器、加热快、耗电少、每吨料干燥综合成本为25-30元/吨。(含水1%以下，PP造粒料测试，0.9元/度电费计算，使用LC-1000+型测试)；
- ▲ 特设双管排湿口，能有效排出湿气，收集粉尘，绝不污染工作环境；
- ▲ 桶体设有入口门，换色换料，清理简单快捷。

- It mainly used in drying and mixing plastic granule, crushed material, plastic sheet and so on. This series of machines have the following characteristics:
- ▲ Mixing and drying at the same time. The materials keeping flow state in the drying process so that the heat quantity penetrates equably, the drying time being short and not easy to getting agglomerate;
 - ▲ Double barrel designed, the contact parts with material are all made of stainless steel, the middle layer is installed special moisturizing material thus to safety and energy-saving;
 - ▲ A high frequency heater, fast heating, less power consumption, comprehensive cost per ton of drying material is about 25-30 RMB per ton.(The percentage of moisture is below 1% and power cost 0.9 RMB / kwh, tested by PP granulation and mode LC-1000+);
 - ▲ Double exhaust port, exhausting moisture effectually, collecting dust, and no pollution;
 - ▲ Changing material or pigment conveniently and simply owing to the barrel with entrance gate.



特点 Features

- ▲ 标准型采用双层桶体设计，（出口型双层不锈钢）内壁为不锈钢材质，坚固耐用，易清理；外层采用A3钢板或不锈钢制作，中间夹层安装保温材料，热量不易过快损耗，节能又安全；
- ▲ 热风口特殊设计，配置高压干燥专用风机，热风渗透快，物料受热均匀，干的快；
- ▲ 特制高频加热器，用电少，热量大；
- ▲ 采用柜式电源控制箱，各种功能一目了然；
- ▲ 设有多种报警提示功能，操控更为人性化；
- ▲ 配置粉尘收集袋，便于粉尘回收，且不污染工作场所，车间干净又环保；
- ▲ 集干燥混料功能二合一，关闭干燥功能，本机又可用于物料搅拌均化。

- ▲ The standard model adopts double-layer designed,both of layers are made of stainless steel,durable and easy to clean.The outside layer is made of A3 steel plate or stainless steel,the intermediate layer is installed heat insulating material so that heat quantity not easy to lost,save energy and safe;
- ▲ Hot air port designed specially,configure with high pressure drying special blower,rapid penetration of hot air, the material is heated evenly and dry fast;
- ▲ High frequency heater,less electricity and large heat quantity;
- ▲ Adopts cabinet electricity control box,various functions are absolutely clear;
- ▲ The operation is more humanized because of a variety of alarm function;
- ▲ The dust collecting bag is configured to facilitate dust collection, and does not pollute the working place, and the workshop is clean;
- ▲ Drying and mixing function are two-in-one.The machine can be used for mixing and homogenizing material when turning off drying function.

规格参数表 Specification Parameter of All Models

型号Model	名称 Name	主机功率 Power	加热功率 Heating power	电压 Voltage	容量 Capacity	外型尺寸 Size
QZ-500	干燥混料机 Vertical Dryer Mixer	4KW-4	15KW	380V	0.5T	Φ1200×2650mm
QZ-1000		4KW-4	20KW	380V	1T	Φ1500×2800mm
QZ-2000		5.5KW-4	20KW	380V	2T	Φ1800×3250mm
QZ-3000		7.5KW-4	30KW	380V	3T	Φ2000×3750mm
QZ-5000		7.5KW-6	40KW	380V	5T	Φ2400×4200mm
QZ-6000		11KW-6	50KW	380V	6T	Φ2500×4500mm
QZ-8000		11KW-6	60KW	380V	8T	Φ2750×5100mm
QZ-10000		11KW-6	70KW	380V	10T	Φ3000×5350mm

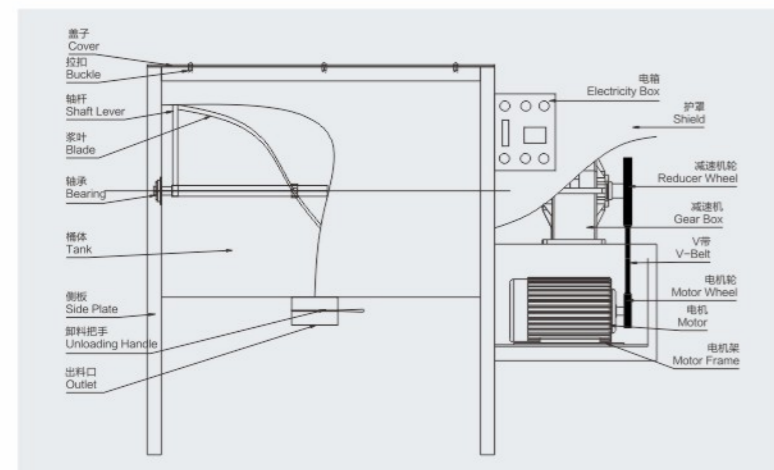
备注：可根据客户要求选用不同材质制作，如A3铁板、201不锈钢、304不锈钢
It can be made of different material according to customers' requirement, such as A3 iron plate,201SS,304SS

Horizontal Ribbon Mixer/Blender

卧式混料机



结构简图 Structure diagram

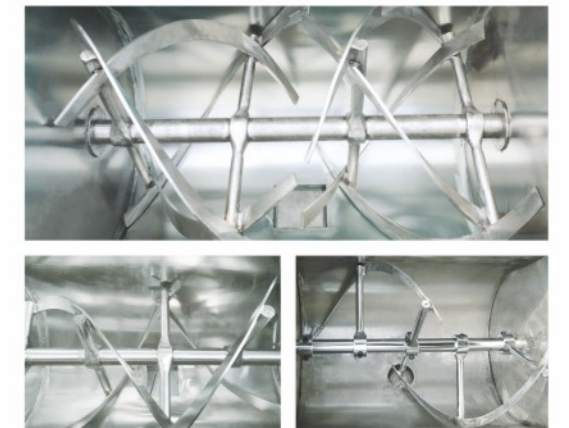


特点 Features

- ▲ 加热干燥型采用双层U形桶体设计，内壁为全不锈钢材质；
- ▲ 采用导热油为加热介质，热量均匀，方便控制；
- ▲ 全不锈钢中心轴及“S”形桨叶，坚固耐用，均化效果好；
- ▲ 选用名厂电机及减速机，出力大，性能稳定；
- ▲ 另购螺旋上料机配套，省去加料平台，安全快捷又方便；
- ▲ 可按客户要求制作手动或气动型出料口；
- ▲ 干燥搅拌二合一，关闭“加热开关”即可用于物料搅拌均化用途；
- ▲ 也可按客户要求，选择碳钢材料制作，节省投资。

- ▲ The Model with heating and drying function is double U-shape barrel designed, and the inner is made by stainless steel;
- ▲ Heating by oil, heating evenly and controlling conveniently;
- ▲ Owing to the central axis with totally stainless steel and S-paddle, the mixer are durable and with good homogenization;
- ▲ Motor and reducer are from famous factory. Large output and stable performance;
- ▲ Buy with the screw conveyor can save the feeding platform. It's safe, quick and convenient;
- ▲ Manual or air operation discharge outlet can be made or chosen according to clients' demand;
- ▲ Mixing and drying are two in one. It can be used for mixing and homogenizing even though closing the heating/drying function;
- ▲ The Horizontal Mixer can be made of carbon steel according to clients' demand so that reducing fund.

食品、化工、全不锈钢搅拌机 All Stainless Steel Mixer for Food or Chemical



更多款式卧式混料机 Models of Horizontal Ribbon Mixer



规格参数表 Specification Parameter of All Models

型号Model	名称 Name	电机功率 Motor Power	加热功率 Heating Watt	外型尺寸(L×W×H) Size
QZ-W200	卧式混合机 Horizontal Mixer	3.75KW-4	9KW	2000×750×1500mm
QZ-W300		3.75KW-4	12KW	2400×800×1650mm
QZ-W500		5.5KW-6	12KW	2200×1100×1800mm
QZ-W1000		11KW-6	24KW	2900×1350×2200mm
QZ-W1500		11KW-6	24KW	3300×1350×2200mm
QZ-W2000		22KW-6	32KW	3400×1450×2400mm
QZ-W2500		22KW-6	32KW	3600×1450×2400mm
QZ-W3000		30KW-6	36KW	4200×1600×2600mm
QZ-W5000		45KW-6	48KW	4500×1950×2800mm

备注：可根据客户要求选用不同材质制作，如A3铁板、201不锈钢、304不锈钢
It can be made of different material according to customers' requirement, such as A3 iron plate, 201SS, 304SS

Automatic Weighing Packaging

自动称重包装

本设备为有斗式称重结构：由机体、称重部分、控制系统、输送缝包等装置组成。

主要用于：塑胶颗粒、饲料、化肥、粮食等行业的定量称重及包装用途。

The device is a bucket weighing structure: by the body, weighing part, control system, transport sewing bag and other devices.

Mainly used for: plastic particles, feed, fertilizer, food and other industries quantitative weighing and packaging purposes.

特点 Features

- ▲ 所有与物料接触部件均采用SUS304不锈钢材质制造，清理换包简单快捷；
- ▲ 标准型采用METTLER-TOLEDO（梅特勒-托利多）高精度称重模块及控制系统，可保证计重精度及运行的稳定性；
- ▲ 可选择配套送纸机、折边机、缝包机，抽真空、热封口等工艺，满足不同的包装要求；
- ▲ 有斗式包装称在工作时不易受到外界环境的干扰，对包装的要求也很宽松，适用性广泛。
- ▲ The all parts contact with material are made of SUS304 stainless steel, easy to clean up and package;
- ▲ Standard type using METTLER-TOLEDO high-precision weighing module and control system to ensure that the accuracy of precision and stability of the operation;
- ▲ Can choose matching machine, folding machine, sewing machine, vacuum, heat sealing and other package technology to meet the different packaging requirements;
- ▲ There are bucket-style packaging that is not easy to work in the external environment of interference, the requirements of the packaging is also very loose, wide applicability.



自动称重包装案例 Automatic Weighing Package Case



规格参数表 Specification Parameter of All Models

型号Model	QZ-10	QZ-25	QZ-50
称重范围 Weighing scope	5-10kg	10-25kg	20-50kg
计量准确度 Measuring accuracy	Level0.2级	Level0.2级	Level0.2级
允许误差 Error	±0.2%F.S	±0.2%F.S	±0.2%F.S
包装能力 Packing Capacity	260~320包Packet/H	240~300包Packet/H	240~300包Packet/H
电源 Power	AC220/50Hz/AC380/50Hz	AC220/50Hz/AC380/50Hz	AC220/50Hz/AC380/50Hz
功率 Watt	3KW	3.5KW	3.5KW
气源 Air supply	0.4-0.6Mpa	0.4-0.6Mpa	0.4-0.6Mpa
耗气量 Air Consumption	0.3Nm3/h	0.3Nm3/h	0.3Nm3/h



热压抽真空一体机
Hot pressing vacuum integrated machine



无斗式自动计量包装机
Bucketless automatic weighing packaging machine



粉体自动计量包装机
Automatic weighing packaging machine for Powder



立式气动热压封口机
Pneumatic hot sealing machine

Plastic Crushing Machine

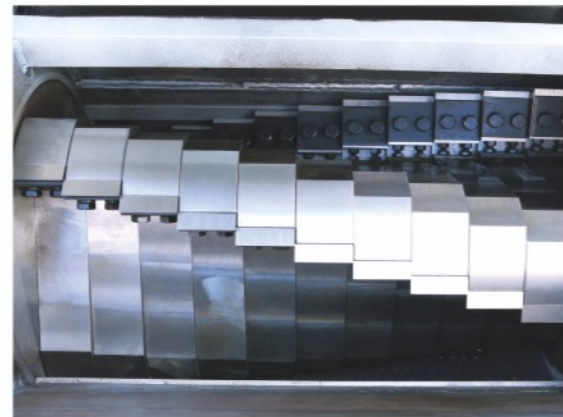
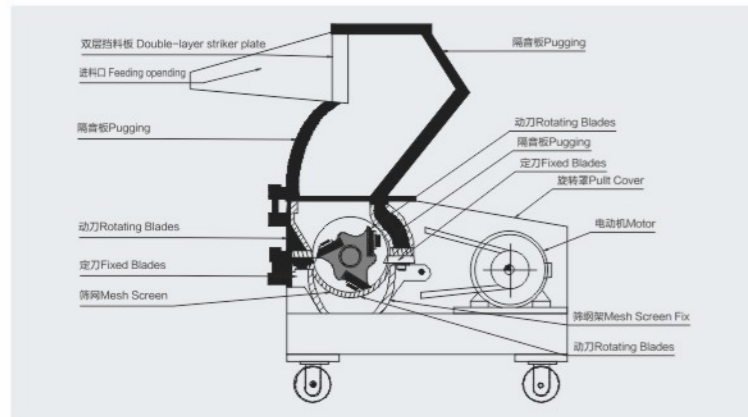
粉碎机

特点 Features

- ▲ 动力座为梯形装备设计，使用肩力分解，造成切屑力倍增；
 - ▲ 重荷型轴承及油封装置，并有防音隔板，能有效防止振动，确保加工物不受油脂污染；
 - ▲ 马达装有超荷保护制，与电源连锁系统，附有清洗刀具保护制，确保清洁时的安全；
 - ▲ 刀具安装设计可伸缩调整，用钝后可多次更磨，反复使用，寿命特长；
 - ▲ 分离设计，落料斗，粉碎室过滤网，便于拆洗；
 - ▲ 小机加工装脚轮，移动方便，大型机加装可调整避振脚，工作平稳。
- ▲ Power seat for the trapezoidal equipment design, the use of chip force decomposition, resulting in chip force times;
 - ▲ Heavy load bearing and oil seal device, and a sound insulation partition, can effectively prevent vibration, to ensure that the processing of products from oil pollution;
 - ▲ Motor with overload protection system, and power supply chain system, with cleaning tool protection system to ensure the safety of cleaning;
 - ▲ Tool installation design retractable adjustment, with a few times after the more polished, repeated use, life span;
 - ▲ Separation design, drop hopper, crushing chamber filter, easy to wash and wash;
 - ▲ Small models processed casters for easy movement. The big models are equipped with adjustable shock absorber feet for stable operation.



结构简图 Structure diagram



规格参数表 Specification Parameter of All Models

型号 Model	马达功率 Motor power	粉碎口径 Crushing Chamber	动刀 Rotary Blade	定刀 Fixed Blade	粉碎能力 Crushing Capacity	外型尺寸 Dimension	重量 Weight
QZ-P190	3HP/2.2KW	190 × 160mm	9	2	30-50KG	850 × 500 × 1100	150kg
QZ-P260	5HP/4KW	270 × 220mm	15	2	50-100KG	900 × 650 × 1200	220kg
QZ-P300	7.5HP/5.5KW	320 × 250mm	9	2	80-150KG	1000 × 700 × 1150	300kg
QZ-P400	10HP/7.5KW	410 × 280mm	12	2	100-200KG	1100 × 860 × 1300	400kg
QZ-P500	15HP/11KW	500 × 320mm	15	2	200-300KG	1400 × 1000 × 1550	600kg
QZ-P600	20HP/15KW	600 × 320mm	18	2	200-400KG	1450 × 1100 × 1620	800kg
QZ-P700	30HP/22KW	710 × 460mm	21	2	400-700KG	1900 × 1400 × 1950	1500kg
QZ-P800	40HP/30KW	810 × 460mm	24	4	400-800KG	2000 × 1500 × 2050	1800kg
QZ-P1000	60HP/45KW	1020 × 650mm	30	4	600-1200KG	2300 × 1800 × 2400	3000kg



周边回收机 Peripheral recycling machine



全不锈钢粉碎机 All Stainless Steel Crushing Machine



桶材粉碎机 Bucket/Bottle Crushing Machine



撕碎加粉碎生产线 Shredding and crushing production line



静音型粉碎机 Sound-proof Crushing Machine



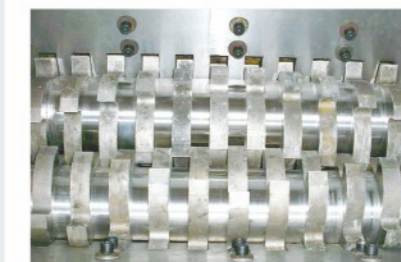
管材粉碎机 Pipe crusher



粉碎机加回收 Crusher with recycling system



撕碎机 Shredder



刀具 Cutters/Knives



刀具 Cutters/Knives

Vertical Color Blending Machine

立式混色机

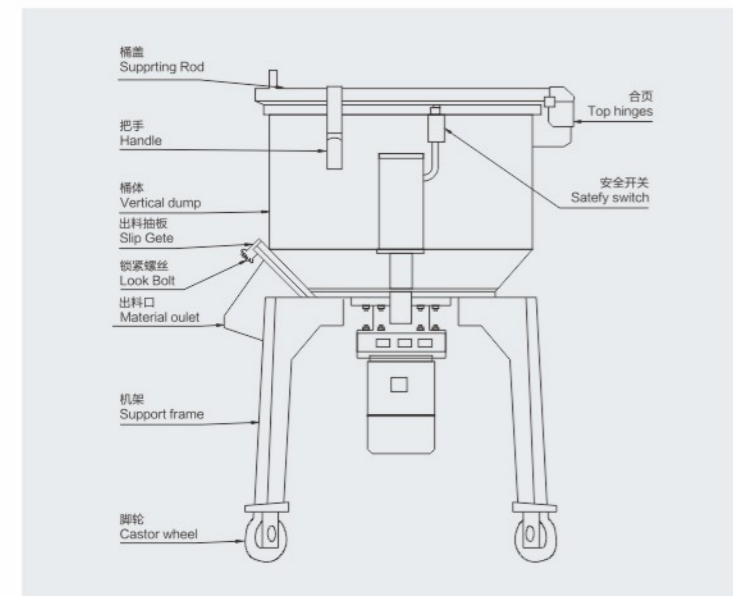
特点 Features

- ▲ 采用进口不锈钢材质制作，高强度耐用及清洗方便；
- ▲ 垂直减速马达，确保噪音低及持久耐用；
- ▲ 结构科学，合理，混合能力强，3分钟内可充分搅拌原料；
- ▲ 占地面积小，脚轮装置移动方便；
- ▲ 机盖附有安全护开关，操作绝对安全。

- ▲ Made of imported stainless steel, high strength, durable and easy to clean;
- ▲ Vertical reducer motor, ensure durable and low-noise;
- ▲ Scientific structure, reasonable, strong mixing ability, mixing the raw materials adequately in 3 minutes;
- ▲ Covers a small area, move easily for caster device;
- ▲ The machine cover with safety protection switch, operation is absolute safe.



结构简图 Structure diagram



规格参数表 Specification Parameter of All Models

型号 Model	功率 Power	容量 Max Capacity	转速 Rotating Speed	机械重量 Weight	机械尺寸(L × W × H) Size
TM-50	1.5kw	50kg	60r/min	100kg	900 × 850 × 1250mm
TM-100	3kw	100kg	60r/min	150kg	1000 × 980 × 1330mm
TM-150	4kw	150kg	60r/min	280kg	1200 × 1100 × 1500mm
TM-200	5.5kw	200kg	60r/min	330kg	1300 × 1150 × 1600mm

Rolling-over Horizontal Color Mixer

翻斗卧式混色机

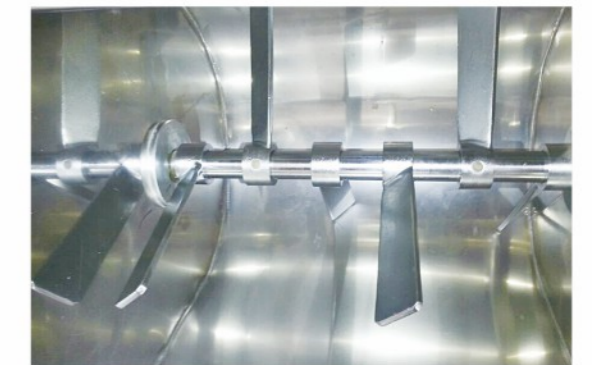
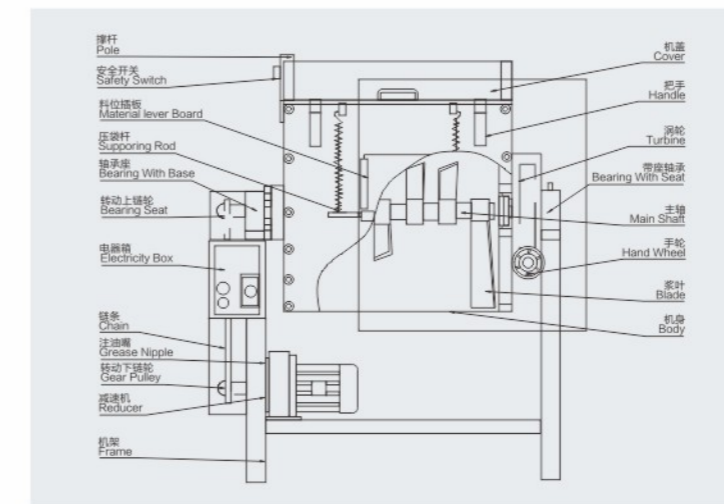
特点 Features

- ▲ 料桶及桨叶采用不锈钢材料制造，清洗容易、避免锈蚀；
- ▲ 料桶可倾斜100度，方便卸料；
- ▲ 连锁安全保护装置，确保操作者及机器设备的安全；
- ▲ 计时器可在0-30分钟之间选择混料时间。

- ▲ Bucket and paddle made of stainless steel, easy to clean, to avoid corrosion;
- ▲ Bucket can be tilted 100 degrees, easy discharge;
- ▲ Chain safety protection device to ensure the safety of operators and machinery and equipment;
- ▲ The timer can select the mixing time between 0-30 minutes.



结构简图 Structure diagram



规格参数表 Specification Parameter of All Models

型号 Model	功率 Power	容量 Capacity	压力 Voltage	外形尺寸(L × W × H) Size	转速 Rotating speed	净重 Net weight
QZ-100	2.2kw 3hp	100kg	380 3Φ	110 × 85 × 130mm	63r/min	285kg
QZ-150	4kw 5.5hp	150kg	380 3Φ	140 × 85 × 130mm	63r/min	385kg
QZ-200	4kw 5.5hp	200kg	380 3Φ	158 × 100 × 140mm	63r/min	530kg

Vibrating Vertical Elevator Machine

振动垂直提升机



本垂直振动提升机是一种新型的垂直振动输送设备，本机对一切颗粒状、块状、粉状的固体物料(粘度不大)都可以输送。振动输送机在向上提升物料的同时，还可以完成对物料的干燥和冷却。分开槽式、封闭式两种结构，并可根据不同的工艺要求，设计物料颗粒分级作用的筛选提升及设计，易燃易爆物料的提升机。

Vibrating vertical elevator machine is a new type of vertical vibration transmission equipment, the machine for all granular, flake, powdery solid material (viscosity is not high) can be transported. The vibrating conveyor can also complete the drying and cooling of the material while lifting the material upwards. Separate trough type, closed two kinds of structure, and according to different process requirements, the design of the role of material particle classification to enhance the design and design of flammable and explosive materials of the hoist.

适用行业 Applicable Industry

产广泛应用于矿山、冶金、机械、建材、化工、橡胶、医药、电力、粮食、食品等行业的块状、粉状和短纤维固体物料的提升。

Widely used in mining, metallurgy, machinery, building materials, chemicals, rubber, medicine, electricity, food, food and other industries block, powder and short fiber solid material upgrade.

特点 Features

- ▲ 产品占地面积小，便于工艺布置；
- ▲ 物料可向上输送，亦可向下输送；
- ▲ 噪音低，结构简单，安装、维修便利；
- ▲ 结构简单合理、能耗小，节约电能，料槽磨损小。
- ▲ Product covers an area of small, easy to process layout;
- ▲ Material can be transported up, can also be transported down;
- ▲ Low noise, simple structure, installation, easy maintenance;
- ▲ Simple and reasonable structure, low energy consumption, saving energy, trough wear small.

规格参数表 Specification Parameter of All Models

型号Model	YQCS-1250	YQCS-2000	YQCS-3500	YQCS-4500	YQCS-6000
输送量(t/h) Delivery quantity	0.3	0.6	3	4	2
输送高度(mn) Conveying height	1250	2000	3500	4500	6000
螺旋槽直径(mn) Spiral groove diameter	300	350(400)	500(610)	500(610)	650(800)
工作频率(hz/min) working frequency	1500	1500	1000	1000	1000
功率(kw) power	2×0.1	2×0.2	2×0.75	2×1.5	2×2.2
供电电压(v) Supply voltage	380	380	380	380	380
额定电流(a) Rated current	2×0.4	2×0.8	2×2.2	2×4.1	2×4.1
合成振幅(mm) Synthetic Amplitude	-4	-4	-4	-4	-4



Vibrating Screen Machine With Storage Tank

储料振动筛选一体机

振动筛选一体机：由振动筛、储料桶及输送管等部件组成，本系列机型设计精致实用，巧妙将振动筛、风机、储料桶设计为一体，具有占地少、效率高、操控方便等优点，主要用于物料筛选，储料用途。

Vibration screening machine: the vibrating screen, storage barrels and pipes and other components, the series models designed exquisite and practical, cleverly vibrating screen, fan, storage bucket design as a whole, with less land, high efficiency, control Convenience, etc., mainly for material screening, storage purposes.

特点 Features

- ▲ 本机可直接对接切粒机，安装方便；
- ▲ 双层不锈钢冲压网，可有效将粉屑、长条、分级排出；
- ▲ 输送管采用快速扣固定，安装清理简单快捷；
- ▲ 采用名厂振动机及风机，噪音小、风力大；
- ▲ 可翻转式储料桶，全不锈钢制造、坚固耐用、清理容易。
- ▲ The machine can be directly connect with granulator cutting machine, and easy to install
- ▲ Double stainless steel stamping screen net which can effectively graded discharge powder and long strip
- ▲ The conveying pipe is fastened with a quick buckle, the installation is simple and quick
- ▲ Vibrating motor and fan from famous manufacturer, with small noise and big wind
- ▲ Flipable drums, all stainless steel, durable, easy to clean



Vacuum Feeder/ Loader Machine

真空吸料机

特点 Features

- ▲ 微电脑操作控制程序，过载、缺料报警；
 - ▲ 300G采用高速整流马达，噪音小、寿命长；
 - ▲ 主机与料斗一体式设计，体积小，重量轻；
 - ▲ 700G采用高速整流马达，体积小、吸料强，适合用于新料输送；
 - ▲ 800G、900G采用感应式高压风机，噪音小，寿命长；
 - ▲ 800G具有逆转自动清除粉尘功能；
 - ▲ 主机与料斗分体设计，安全、简便，独立滤清装置，方便消除粉尘。
-
- ▲ Microcomputer operation control program with overload and lack of material alarm;
 - ▲ 300G adopts high speed rectifier motor, therefore low noise and long life;
 - ▲ Integrated design of the main engine and hopper, therefore small size and light weight;
 - ▲ 700G adopts high speed rectifier motor, small size and strong suction. It is suitable for conveying new material;
 - ▲ 800G and 900G adopts induction type of high pressure blower, therefore low noise and long life;
 - ▲ 800G is with function of reversing automatically and removing dust;
 - ▲ It is safe and simple because of dividing design for main engine and hopper. And independent filter for easy removing of dust.



Vacuum Loader and Centralized Feeding

吸料机、集中供料



高压风机泵站 High Pressure Air Pump Station



Vibrating Screen Machine

振动筛选机



该机设计精巧实用，采用名厂振动电机，经久耐用，与物料相接触部分全部采用不锈钢制作，不锈钢冲压筛网、规格尺寸可按客户要求订做，可安装二层冲压筛网，物料分3个等级自动排出，操作简便，故障少，是筛选原料的最佳选择。

The machine is designed to be compact and practical. The vibrating motor from famous manufacturer, it is durable. All parts in contact with the material are made of stainless steel. The stainless steel stamping screen and size can be customized according to your requirement. It can be installed two layers stamping screen so that the material is automatically discharged in 3 levels. It is easy to operate, less fault and the best choice for screening raw materials.

更多款式振动筛选机 More Styles of Vibrating Screen Machine



Underwater Granulation Dewatering Machine

水下造粒脱水机



特点 Features

离心脱水机为全不锈钢制造，适用于挤出造粒生产线水环切粒，水下造粒，物料与水分离干燥，内部离心转子均进行动平衡调试加工，整机高速运行，平稳无抖动。根据不同物料的产量进行匹配适用的机型。

Centrifugal dewatering machine is made of stainless steel which is suitable for water ring cutting granulating production line and underwater granulation. Material and water to be separated and dried. The internal centrifugal rotor are dynamic balance debugging process, the whole high-speed operation, smooth without shaking. To match the applicable models according to output of different materials.

型号 Model	名称 Name	功率 power	产量 Working Ability	转速 Rotating speed	材质 Material
QZ-500	脱水机 Dewatering Machine	5.5kw	200-500kg	1440r/min	不锈钢 Stainless Steel



Large Drum Mixer

大型滚桶混料机



特点 Features

- ▲ 料桶采用全不锈钢制造，清洗容易，避锈蚀；
- ▲ 料桶可360° 旋转，混合均匀，内部无任何桨叶，换料清洗方便；
- ▲ 外围带防护栏，确保操作者及机器设备的安全性能；
- ▲ 计时器控制拌料时间，转速可调，变频控制。
- ▲ The barrel is made of stainless steel, easy to clean, avoid rust
- ▲ Barrel can be 360° rotation, mixing evenly, without any internal blade. It is easy to change material and cleaning
- ▲ Peripheral fence, to ensure the safety of operators and machinery equipment
- ▲ Timer control mixing time, adjustable speed, with frequency control

规格参数表 Specification Parameter of All Models

型号Model	功率 Power		容量 Max Capacity	电压 Voltage	转速 Rotating Speed
QZ-300	2.2kw	3hp	300kg	380 3Φ	20r/min
QZ-500	4kw	5.5hp	500kg	380 3Φ	20r/min
QZ-1000	4kw	5.5hp	1000kg	380 3Φ	20r/min

Screw Conveyor Series

螺杆输送机系列



特点 Features

- ▲ 采用不锈钢制造，输送管、中心主轴、螺片、料箱均为不锈钢材质，坚固耐用；
- ▲ 可与各种规格挤出机，搅拌机配套使用；
- ▲ 适用于各种颗粒状、粉碎料等物料上料输送用途；
- ▲ 配备自动加料控制箱，可有效降低工人的工作强度，提高工作效率；
- ▲ 常备Φ108、Φ133、Φ159、Φ168、Φ219mm等管径规格供客选用，工作能力为0.5-10吨/h。
- ▲ Made of stainless steel .Conveying pipe, spindle, whelk, feed box are all made of stainless steel, durable;
- ▲ It can be with all kinds of extruders and mixers from a complete set;
- ▲ It's the same with conveying all kinds of granular, powder and so on;
- ▲ Equipping with automatic feeding control box, which can effectively reduce the work intensity of workers and improve the work efficiency;
- ▲ Φ108, Φ133, Φ159, Φ168, Φ219mm, diameter specifications are ever prepared for customers to choose. The working ability: 0.5-10 ton/h.

特点 Features

- ▲ 采用不锈钢制造，输送管、中心轴、螺片、料箱均为不锈钢材质，坚固耐用；
- ▲ 可与各种规格挤出造粒机，高速搅拌机配套使用；
- ▲ 适用于各种粉体材料、PET、吸塑片材、薄膜粉碎料的上料输送用途；
- ▲ 配备自动加料控制箱，可有效降低工人的工作强度，提高工作效率；
- ▲ 常备Φ89、Φ108、Φ114、Φ133、Φ159、Φ168等管径规格供客选用，工作能力为0.3-5吨/h。
- ▲ Made of stainless steel .Conveying pipe, spindle, whelk, feed box are made of stainless steel, durable;
- ▲ It can be with all kinds of extrusion granulating machine, high-speed mixer from a complete set;
- ▲ It's the same with conveying all kinds of powder, PET, plastic sheet, film crushing material;
- ▲ Equipping with automatic feeding control box, which can effectively reduce the work intensity of workers and improve the work efficiency;
- ▲ Φ89, Φ108, Φ114, Φ133, Φ159, Φ168mm, diameter specifications are ever prepared for customers to choose. The working ability: 0.3-5 ton/h.



特点 Features

- ▲ 采用不锈钢制造，输送管、中心主轴、螺片、料箱均为不锈钢材质，坚固耐用；
- ▲ 可与各种规格挤出机、造粒机、破碎机配套使用；
- ▲ U形上料机盖板可灵活拆装，换色清理简单快捷；
- ▲ 配备自动加料机控制箱，可有效降低工人的工作强度，提高工作效率；
- ▲ 常备Φ200、Φ250、Φ300、Φ350、Φ400mm等管径规格供客选用，工作能力为1-15吨/h。
- ▲ Made of stainless steel. Conveying pipe, spindle, whelk, feed box are made of stainless steel, durable;
- ▲ It can be with all kinds of extruders , granulator, crusher from a complete set;
- ▲ The U type feeding cover can be disassembled and assembled flexibly, it's easy to color changing and cleaning;
- ▲ Equipping with automatic feeding control box, which can effectively reduce the work intensity of workers and improve the work efficiency;
- ▲ Φ200, Φ250, Φ300, Φ350, Φ400mm, diameter specifications are ever prepared for customers to choose. The working ability: 1-15 ton/h.



Granulator Cutting Machine

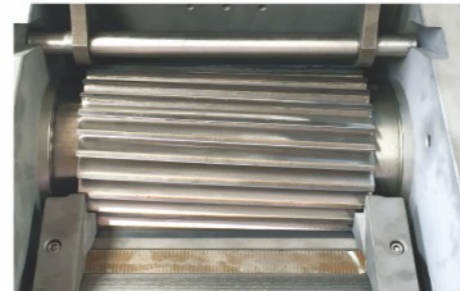
切料机

齿轮箱转动：克服跳动及不稳定性，有效增强扭矩。
 加固支架：提高了其载荷能力。
 电机传动：采用德国进口电机及转动箱。
 超级胶辊：更具耐高温及耐磨性。
 强制冷却：胶辊部分增加强制冷却功能。

Gearbox rotation: to overcome the beating and instability, effectively enhance the torque.
 Reinforcement bracket: Increases its load capacity.
 Motor drive: Germany imported motor and rotating box.
 Super rubber roller: more high temperature and wear resistance.
 Forced cooling: the roller part of the increase in forced cooling function.



软胶切粒刀具 Cutter for soft plastic



硬胶切粒刀具 Cutter for hard plastic

Dewatering Machine With Washing

洗料脱水机

离心脱水机由：喂料斗、离心甩干机体、出料口、电控箱等部件组成，具有工作效率高、坚固耐用、操作方便、安全可靠等优点；是破碎塑料清洗后脱水的最佳选择。

It made of feeding hopper, centrifugal drying machine, discharge port, electric cabinet and any other components. High efficiency, durable, easy to operate, safe and reliable. It's the best choice to dehydrate plastic materials after cleaning.

型号Model	QZ-750	QZ-1500
电机功率 Motor Power	7.5kw	11kw
工作能力 Capacity	750-1000kg/h	1500-2000kg/h
材质 Material	201或304不锈钢 201SS or 304SS	



Parallel Twin Screw Extruder

平行同向双螺杆挤出机

- ▲ 欧式矩形筒体,优化布置逆流冷却流道,让C形区域温差更小;
 - ▲ 创新设计的加热器紧固方式,确保高效传热和加热器高寿命;
 - ▲ 根据物料及特定工艺要求,筒体材质可先用标准优质氮化钢、耐腐蚀或耐磨蚀等特殊材质与处理方式。
- ▲ European rectangular cylinder, optimize the layout of the counter-current cooling runner, so that the C-shaped regional temperature difference is smaller;
- ▲ Innovative design of the heater fastening way to ensure efficient heat transfer and high life to heater;
- ▲ According to the material and specific process requirements, the cylinder material can be made of special materials such as standard high-quality nitriding steel, corrosion-resistant or abrasion-resistant, other special materials and treatment methods.

- ▲ 切粒方式多元化:如水冷拉条切粒、风冷模面切粒、水环模面切粒、偏心水雾粒、水下模面切粒等。
- ▲ Diversification of pelletizing methods: such as water-cooled pull line cutting, air-cooled mold surface cutting, water ring mold surface cutting, eccentric water mist particles, underwater mold surface cutting.



独特的结构设计:

- ▲ 易于嵌入辅助设备如润滑系统循环水系统,真空排气系统等,节省空间;
- ▲ 出厂前完成配线、配管、缩短安装调试时间。

Unique structural design:

- ▲ Easy to embed auxiliary equipment such as lubrication system circulating water system, vacuum exhaust system, save space;
- ▲ The factory completed wiring, piping, shorten the installation and commissioning time.



- ▲ 螺杆元件采用精确的设计,通过精密加工,灵活的组合和互换性,实现完成各种传输与混炼、建压、挤出及自清洁过程,材料采用优质38CrMoALA或W6MosCr4V2材质,经特殊热处理,具有高耐磨性和耐腐蚀性。
- ▲ Screw components using precise design. To achieve a variety of transmission, mixing, pressure, extrusion and self-cleaning process by precision finishing, flexible combination and interchangeability. The material used high-quality 38CrMoALA or W6MosCr4V2 material with special heat treatment so that it is high wear resistance and corrosion resistance.

- ▲ 采用积木式原理,机组的长径比,机筒及螺杆的组成形式,喂料方式,换网及切粒方式,电仪自控模式均可按物料性能及工艺流程的要求进行组合,实现了广泛性、通用性、专用性的一兼顾。
- ▲ The modularity of the unit, the aspect ratio of the unit, the form of the barrel and the rod, the way of feeding, the way of changing the net and the way of cutting, the automatic control mode of the instrument can be combined according to the requirements of the material performance and the technological process. Extensive, versatile, and exclusive.

- ▲ 喂料形式多元化,单螺杆、双螺杆、空心螺杆、强制喂料、侧向喂料、液体加注系统等,以适应粉体、粒料、块料以及液体料的不同喂料要求。
- ▲ Diversified feeding mode: single screw, twin screw, hollow screw, forced feed, lateral feed, liquid filling system, etc. To meet different feeding requirements for powder, granules flake and liquid material.



新型齿轮传动系统:

- ▲ 新型平行三轴传动方案,减速与扭矩分配一体式,结构紧凑,关键轴承进口;
- ▲ 计算机设计优化齿轮参数,强化设计安全余量;
- ▲ 传动部件选材讲究,超高强度合金渗碳钢,渗碳淬火,磨齿工艺,齿面强化处理,确保高扭矩、高精度、低噪音;
- ▲ 齿轮浸油润滑与轴承强制润滑结合的润滑方式。

New gear drive system:

- ▲ New parallel triaxial transmission program, deceleration and torque distribution integrated. With compact structure and imported key bearing;
- ▲ Computer design optimization gear parameters, enhanced design safety margin;
- ▲ The selection of transmission part is very particular. Ultra-high strength alloy carburizing steel, carburizing quenching, grinding process, tooth surface strengthening treatment to ensure high torque, high precision and low noise;
- ▲ Lubrication method combining gear immersion lubrication and bearing forced lubrication.

Single Screw Extruder Series

单螺杆挤出机系列



Liquid Mixer/Chemical Mixer

溶体搅拌机系列

特点 Features

- ▲ 全304不锈钢制作;
- ▲ 内置多层桨叶;
- ▲ 传动为减速变频调速;
- ▲ 根据客户要求制作不同规格容积;
- ▲ 可安装直接加热与导热油供热方式;
- ▲ 适应行业: 洗涤用品, 化工电镀, 食品液态搅拌等。

- ▲ All made of 304 stainless steel;
- ▲ Multilevel paddles are built-in;
- ▲ Transfer motion is reducing the speed with frequency control;
- ▲ Producing different model volume according to requirement by clients;
- ▲ It can be installed direct heating and supplying of heat by heat conduction oil;
- ▲ Application: Chemical washing detergent, chemical plating, liquid food mixing.



Pull Line Water Remover for Extruder Line

造粒生产线拉条打水机



Pull Line Dryer for Extruder Line

造粒生产线拉条吹干机



Liquid Injection Pump

液体注塞泵

特点 Features

- ▲ 配置全不锈钢双加热桶;
- ▲ 变频控制计量注塞泵, 根据变频高速控制注塞流量;
- ▲ 用于挤出造粒微量添加的防火油剂, 可直接挤出机筒体连接注塞喷射。
- ▲ Equipped with all stainless steel double heating barrels;
- ▲ Variable frequency control metering plug pump, according to variable frequency high-speed control plug flow;
- ▲ The machine is used for extrusion granulating and micro-addition of fire-retardant oil. The extruder barrel can be directly connected to the injection jet.



Extruder Vacuum Bucket

挤出机真空桶

特点 Features

- ▲ 全不锈钢材质、防磨蚀;
- ▲ 配置三个透视镜窗口, 分别为灯光镜、观察镜、水位镜;
- ▲ 大口径易拆盖头、清洗方便, 所有管道接口为活接卡箍。
- ▲ All stainless steel, anti-abrasion;
- ▲ Equipped with three perspective mirror windows which are light mirror, observation mirror, water level mirror;
- ▲ The cover is large diameter and easy to be removed so that easy to clean. All pipe connections are live clamps.



Oil Measuring Machine

油品计量机



特点 Features

整套设备由计量平台、不锈钢储油箱（可根据要求定制不同容量）、多组进油气动电子阀、多组输出气动电子阀、人机界面一体化控制系统。计量系统采用增重模式，对油品的密度与溶度没有选择性，精度可达到±3%，同时可计量多种油品，计量控制系统内自带月报表，可随时监控每种油品的使用量，自带输出油泵，可远距离输送多台用油设备。适合TPE、PVC等生产工艺中使用油品充油计量。

The whole set of equipment consists of weight platform, stainless steel oil storage tank (the volume can be customized according to requirements), multiple sets of oil inlet pneumatic electronic valve, multiple sets of output pneumatic electronic valve, and man-machine interface integrated control system. The metering system adopts the weight-increasing mode, which has no selectivity for the density and solubility of the oil, and the precision can reach ±3%. At the same time, it can measure a variety of oil products. The metering control system has its own monthly report, which can monitor the use amount of each oil product at any time. Equipped with its own output oil pump, can transport multiple units oil equipment over long distances. It is suitable for oil filling and metering in production processes such as TPE and PVC.

Circular Vibrating Screen Machine

圆盘振动筛选机



特点 Features

- ▲ 所有筛盘整体全为不锈钢材质、防磨蚀；
- ▲ 筛网可根据筛选不同目数的物料，可随着更换不同目数筛网，可以一台增加多层筛网网盘；
- ▲ 每层筛网均带有防堵网橡胶球。
- ▲ The machine all made of stainless steel besides frame. It is anti-abrasion;
- ▲ Screen can be based on the screening of different mesh materials, with the replacement of different mesh screen, you can increase the multi-layer screen disk;
- ▲ Each layer of the screen with anti-blocking screen rubber ball.

规格参数表 Specification Parameter of All Models

型号Model	功率 Power	直径 Diameter	电压 Voltage	外形尺寸 Dimensions
QZ-600	0.25kw	Φ600	380v	800 × 800 × 750mm
QZ-800	0.55kw	Φ800	380v	900 × 900 × 750mm
QZ-1000	1.1kw	Φ1000	380v	1160 × 1160 × 810mm
QZ-1200	1.5kw	Φ1200	380v	1300 × 1300 × 950mm
QZ-1500	2.2kw	Φ1500	380v	1600 × 1600 × 1050mm

Vertical Conveyor Bucket Elevator

垂直输送斗式提升机



特点 Features

- ▲ 可用于食品、农作物、制药、塑料化工等部门的颗粒状或块状产品的垂直升运；
- ▲ 料斗由食品级的聚丙烯材料铸模而成，安全卫生，具有外型美观，不易变形，耐高温和低温的特点(-5℃-60℃)；
- ▲ 可以完美的实现连续或间歇式输送以及可以配套其他的喂料设备；
- ▲ 容易组装和拆卸，料斗清洗方便；
- ▲ 具有提升量大、提升度高等优点；
- ▲ 通过控制电路和料位控制实现自动供料和停止的自动化功能。
- ▲ Vertical lift for granular or block products used in food, crop, pharmaceutical, plastics and chemical industries;
- ▲ The hopper is made of food grade polypropylene material mold, safe and hygienic, with beautiful appearance, not easy to be out of shape, high temperature and low temperature characteristics (-5℃-60℃);
- ▲ Perfect to achieve continuous or intermittent loading, and it can be used with other feeding equipment;
- ▲ Easy to assemble and disassemble, and the hopper is easy to clean;
- ▲ It has the advantages of large lifting capacity and high lifting degree;
- ▲ Automatic function of feeding and stoping is by control circuitry and level control.

规格参数表 Specification Parameter of All Models

材质 Material	产能 Capacity	料斗 Hopper	机器高度 Machine height	电压 Voltage	功率 Power
根据要求用全不锈钢或A3钢板 Made of stainless steel or A3 steel plate according to requirement	4-6立方(吨)/时 4-6 Cube (Ton)/H	1.8升 1.8L	可根据要求随意订制不同高度与横向距离 Different heights and lateral distances can be customized according to requirement	AC220V单相或AC380V三相、50Hz AC 220V/single phase/50HZ AC 380V/3 phase/50HZ	0.75KW



Material Storage Tank

物料储存仓



High Speed Mixer

高速混合机

该机主要由锅体、搅拌桨叶、动力转动装置、底座和电控柜等组成。广泛应用于塑料、橡胶、染料、食品、化工、Caco3等粉、粒、液体物的干燥、搅拌和混合。

The machine is mainly composed of pot body, mixing blade, power rotating device, base, electric control and son on. Widely used in plastics, rubber, dyes, food, chemicals, Caco3 and other powder, granules, liquid drying, mixing and mixing.



规格参数表 Specification Parameter of All Models

参数Data 型号Model	总容积 Capacity(L)	有效容积 Effective Capacity(L)	电机功率 Motor Power(KW)	主轴功率 Mainshaft Speed(rpm)	卸料方式 Discharge Method	加热方式 Heating Method
QZ-5A	5L	9L	1.2kw	1400rpm	手动 Hand work	电加热 Electric heating
QZ--10A	10L	7L	3kw	2000rpm		
QZ-25A	25L	18L	5.5kw	1750rpm		
QZ-50A	50L	35L	7/11kw	750/1500rpm	气动 Air-operated	
QZ-100A	100L	70L	11/22kw	650/1300rpm		
QZ-200A	200L	140L	30/42kw	550/1100rpm		
QZ-300A	300L	210L	40/55kw	475/950rpm		
QZ-500A	500L	350L	47/67kw	430/860rpm		
QZ-800A	800L	560L	60/90kw	370/740rpm		
QZ-1000A	1000L	700L	83/110kw	320/640rpm		

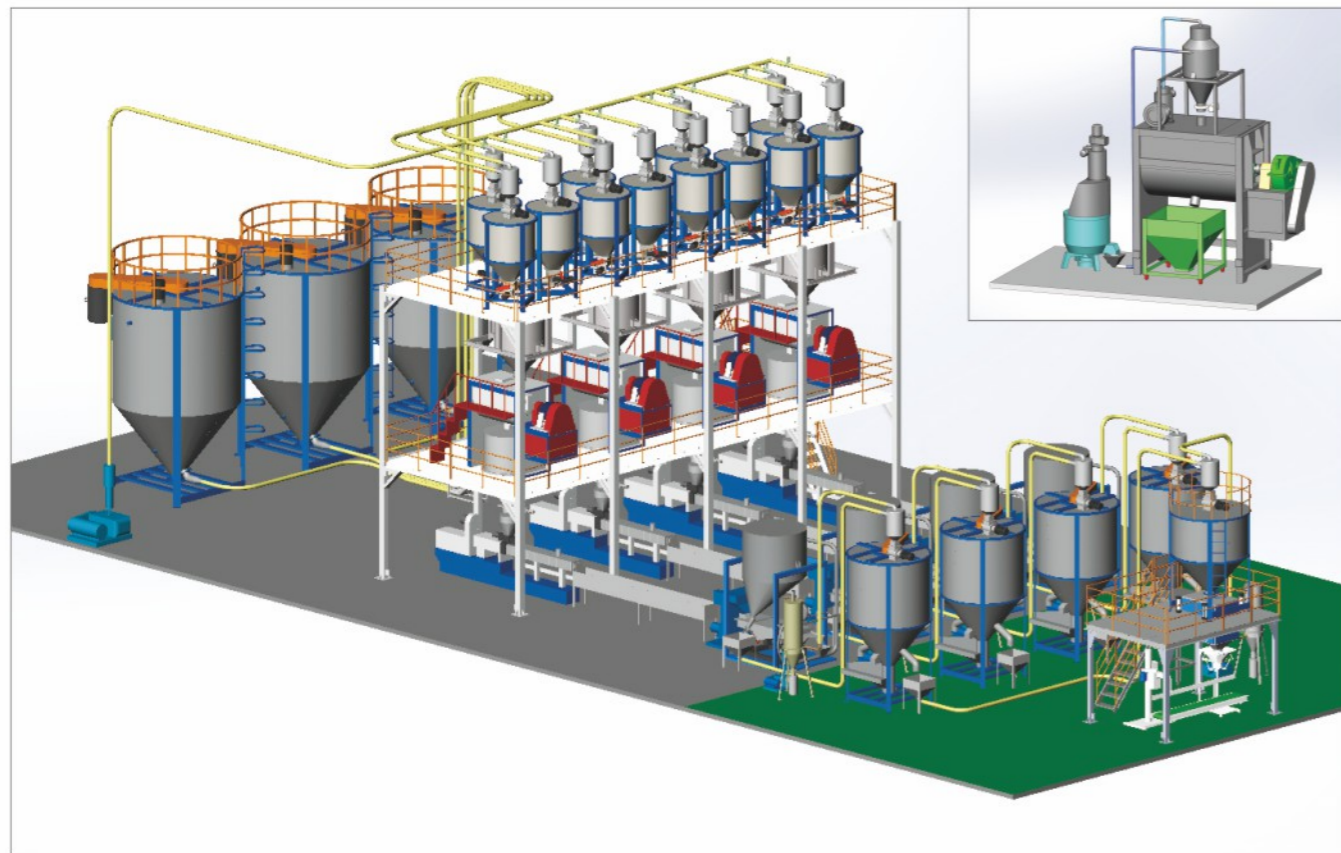
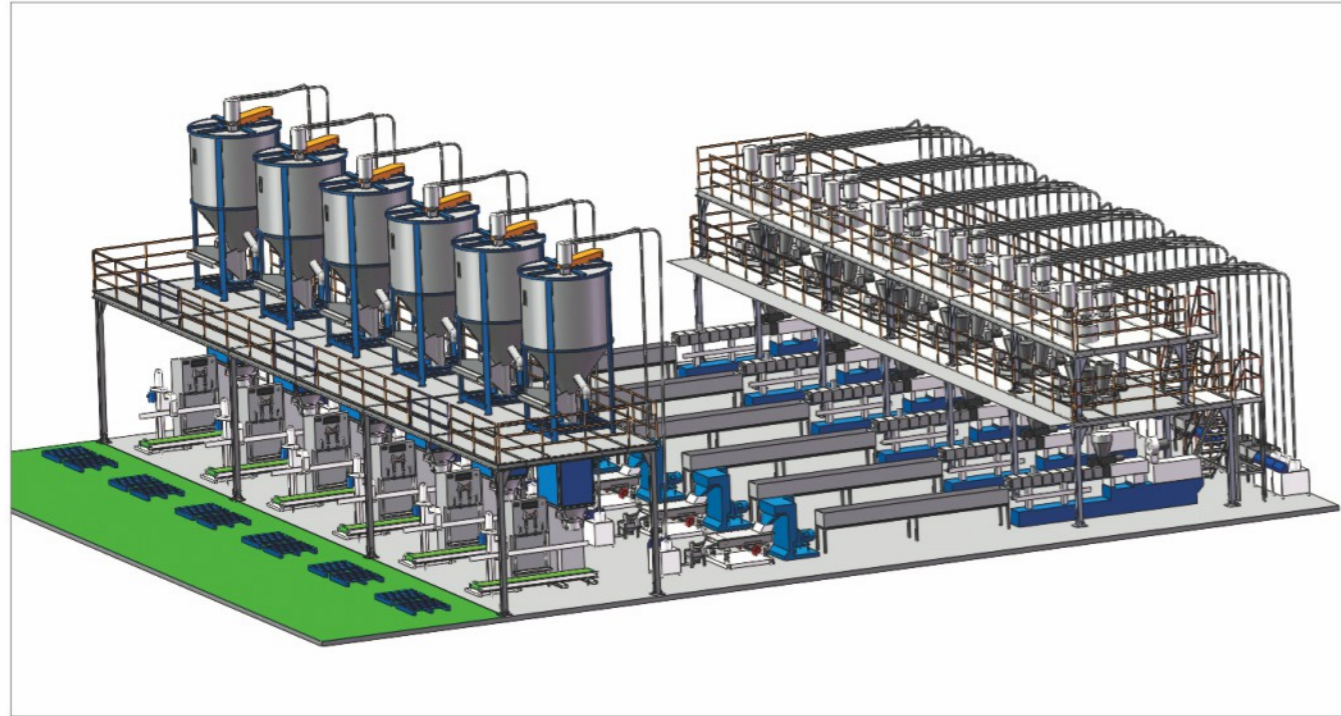
Metal Separator

金属分离器



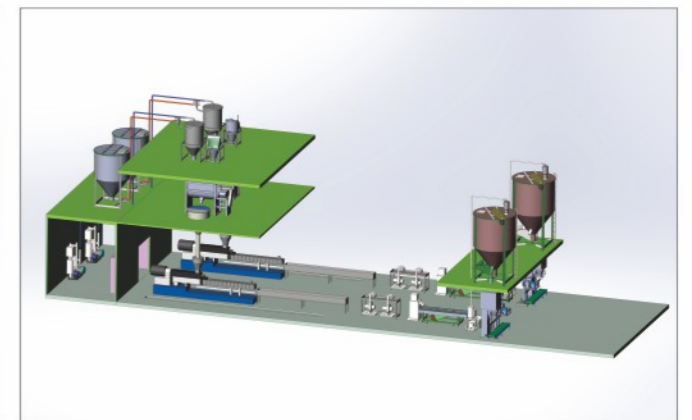
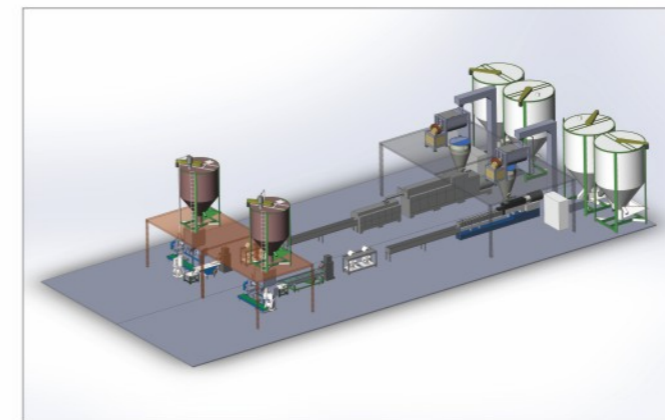
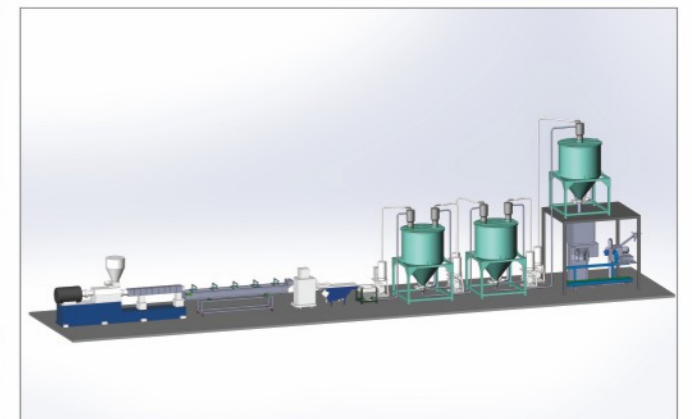
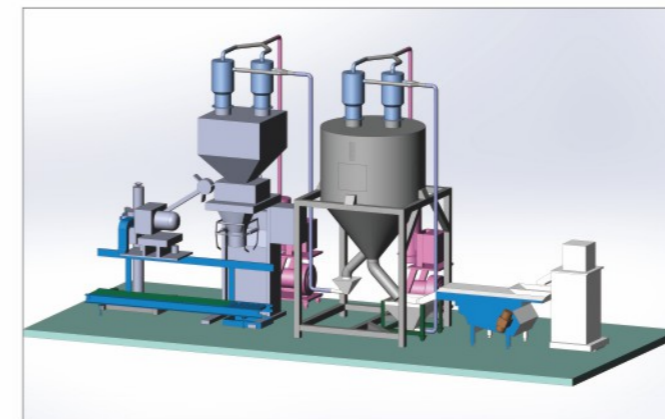
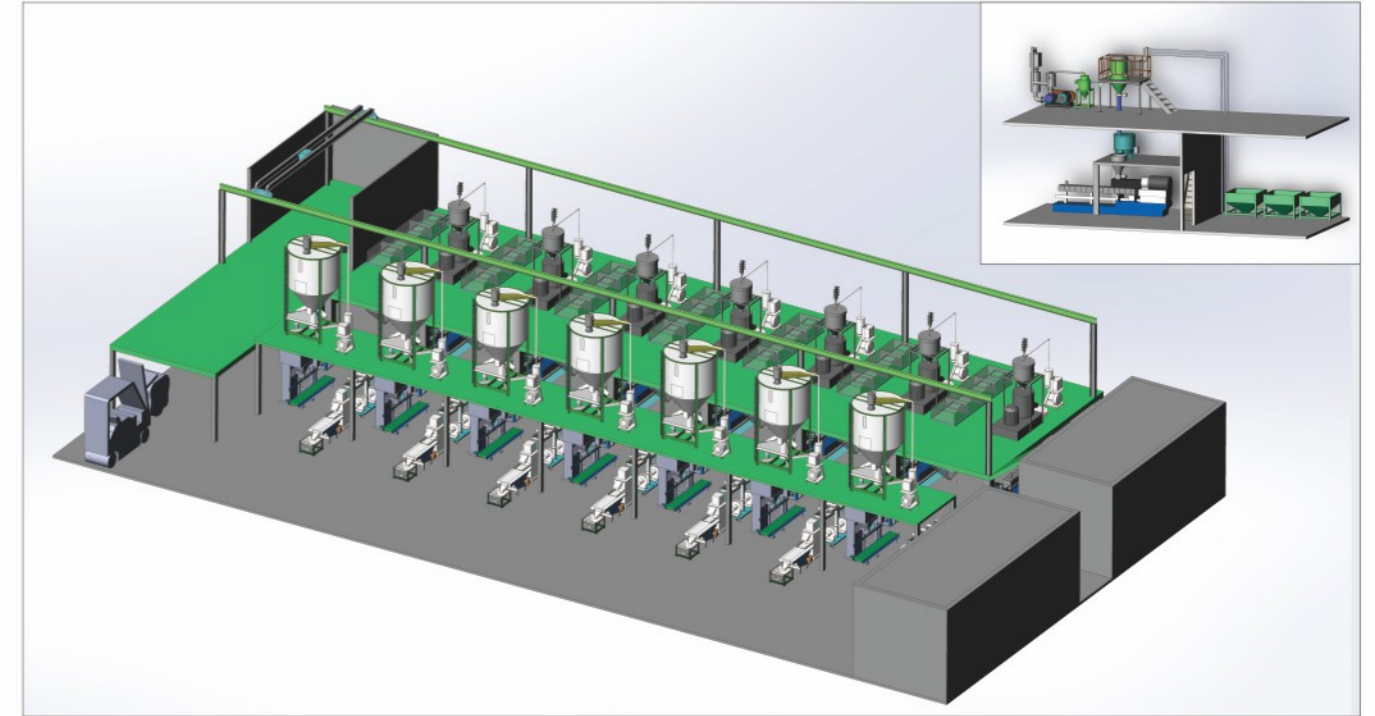
Automatic Conveying and Batching System Plan Diagram

自动化输送、配料系统方案图



Automatic Conveying and Batching System Instance Diagram

自动化输送、配料系统实例图



Engineering Case

工程案例

